

EXISTING PRESERVED TREES ABOVE 10 DBH		
TREE	(DBH)	CANOPY
1	34	2500
5	25	2000
6	11	500
7	28	2000
8	18	1500
9	25	2000
10	25	2000
11	28	2000
12	23	1500
13	26	2000
14	14	1000
15	16	1000
16	11	500
17	12	1000
18	14	1000
19	25	2000
20	11	500
21	37	3000
22	32	2500
23	13	1000
24	15	1000
25	25	2000
26	25	2000

EXISTING TREES TO BE REMOVED		
TREE	(DBH)	CANOPY
2	31	2500
3	25	2000
4	30	2500
29	14	1000
30	18	1500
31	28	2000
32	40	3000
33	23	1500
34	21	1500
35	28	2000
36	27	2000
38	28	2000
39	25	2000




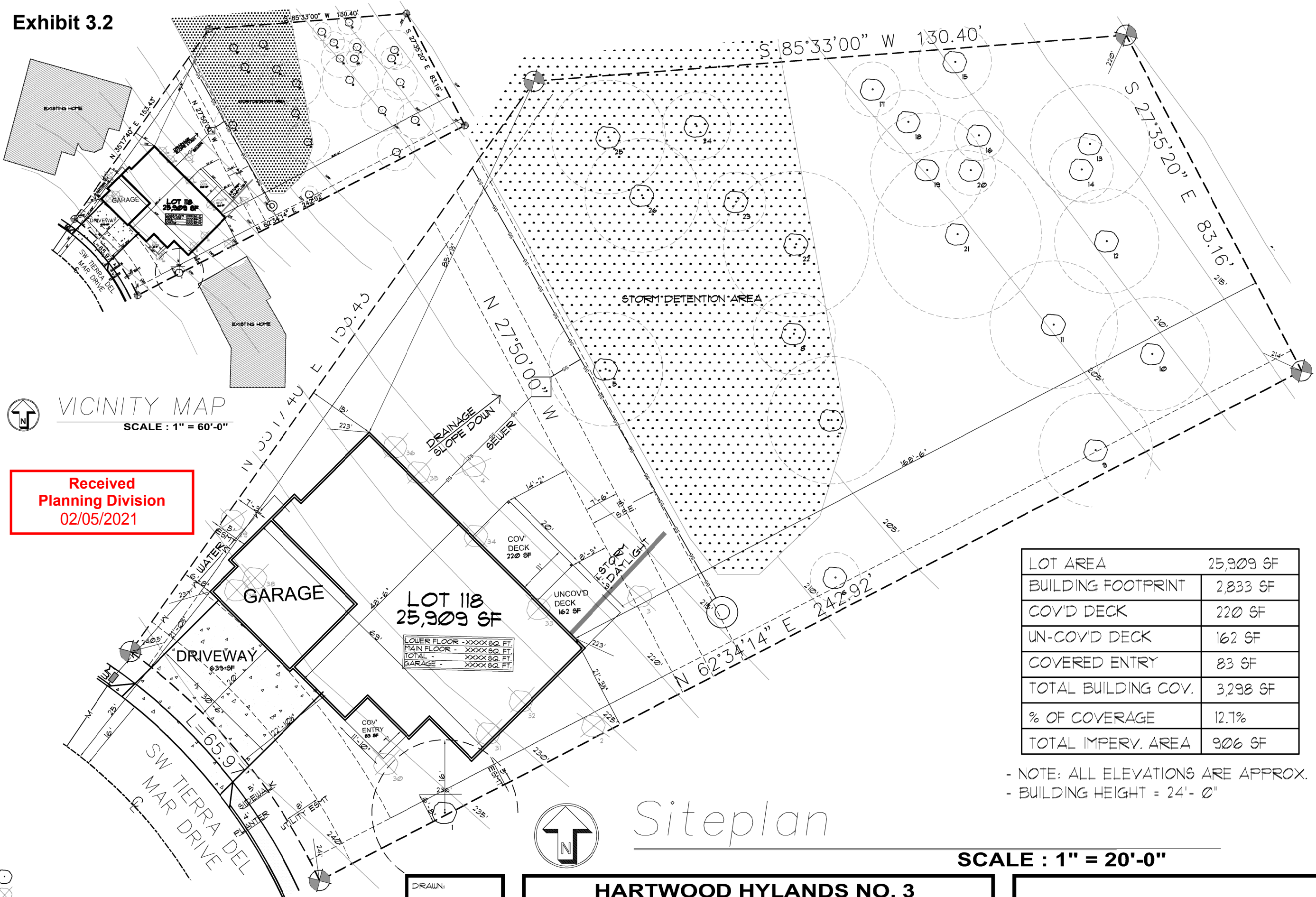
LEGEND
 EXISTING TREE TO BE PRESERVED: 
 TREE TO BE REMOVED: 
 EXISTING TREE ROOT PROTECTION ZONE (1 FT DIA/1 IN DBH): 

Exhibit 3.2



VICINITY MAP
 SCALE : 1" = 60'-0"

**Received
 Planning Division
 02/05/2021**

LOT AREA	25,909 SF
BUILDING FOOTPRINT	2,833 SF
COV'D DECK	220 SF
UN-COV'D DECK	162 SF
COVERED ENTRY	83 SF
TOTAL BUILDING COV.	3,298 SF
% OF COVERAGE	12.1%
TOTAL IMPERV. AREA	906 SF

- NOTE: ALL ELEVATIONS ARE APPROX.
 - BUILDING HEIGHT = 24'-0"



Siteplan

SCALE : 1" = 20'-0"

DRAWN:	3370
DRAWN:	E-DRFT
PLOT:	2/5/21
REV:	2/5/21

**HARTWOOD HYLANDS NO. 3
 WASHINGTON COUNTY, OREGON
 SITE REV 2**

HILLCREST HOMES